


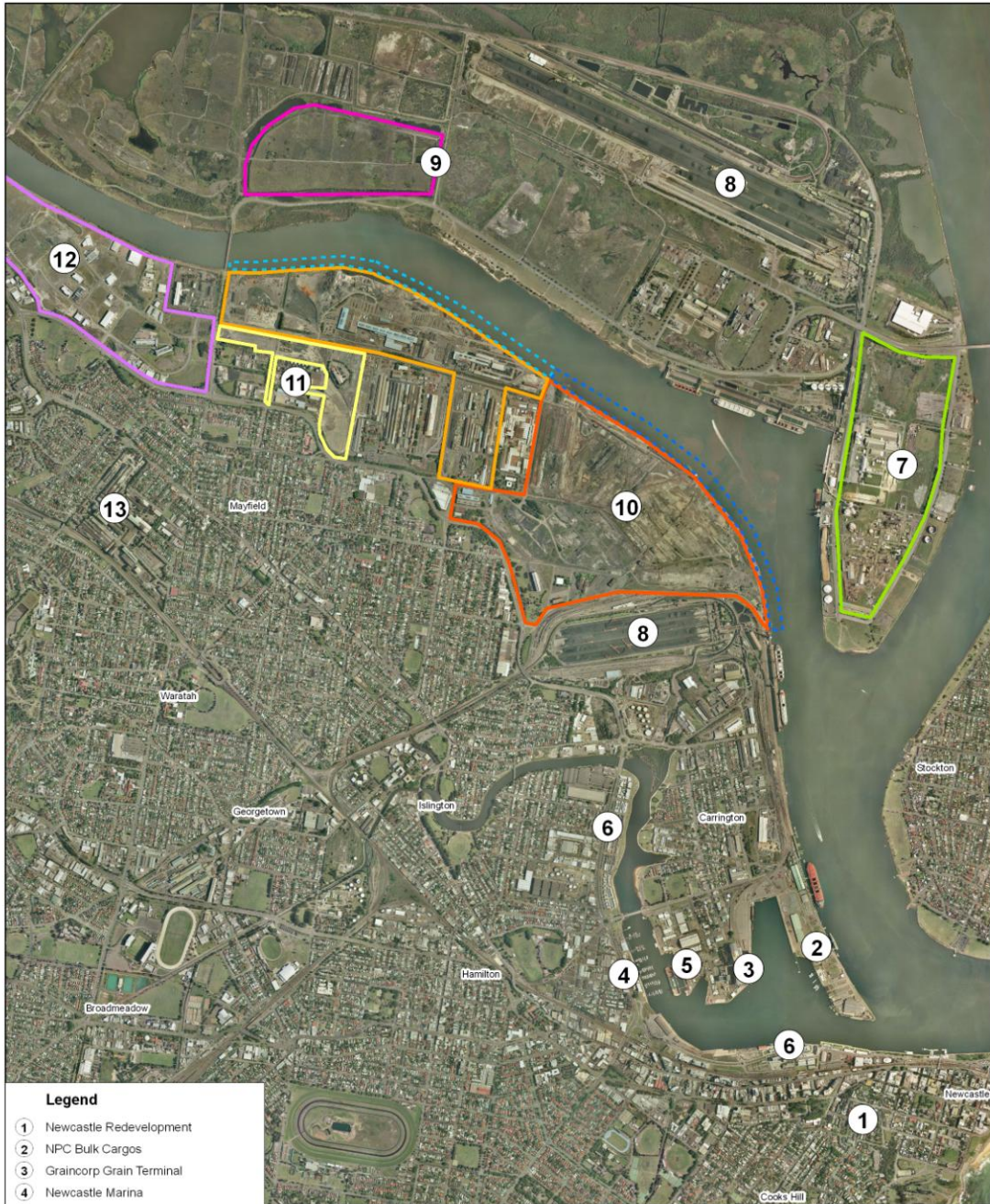
**Legend**

-  Power Stations
-  Toronto WWTW
-  Belmont WWTW
-  Dora Creek WWTW

## Pollution Control Lake Macquarie Catchment

Copyright Department of Environment, Climate Change & Water (NSW) June, 2010.  
This map is not guaranteed to be free from error or omission.  
The Department of Environment, Climate Change & Water (NSW) and its employees  
disclaim liability for any act done in reliance on the information on the  
map and any consequences of such acts or omissions.

  
 0 0.5 1 1.5 2 km  
 Datum/Projection: GDA 1994 MGA Zone 56  
 Printed By:  
 DECCV  
 23 June 2010  
© Minister/Secretary/Chief Executive/Local...

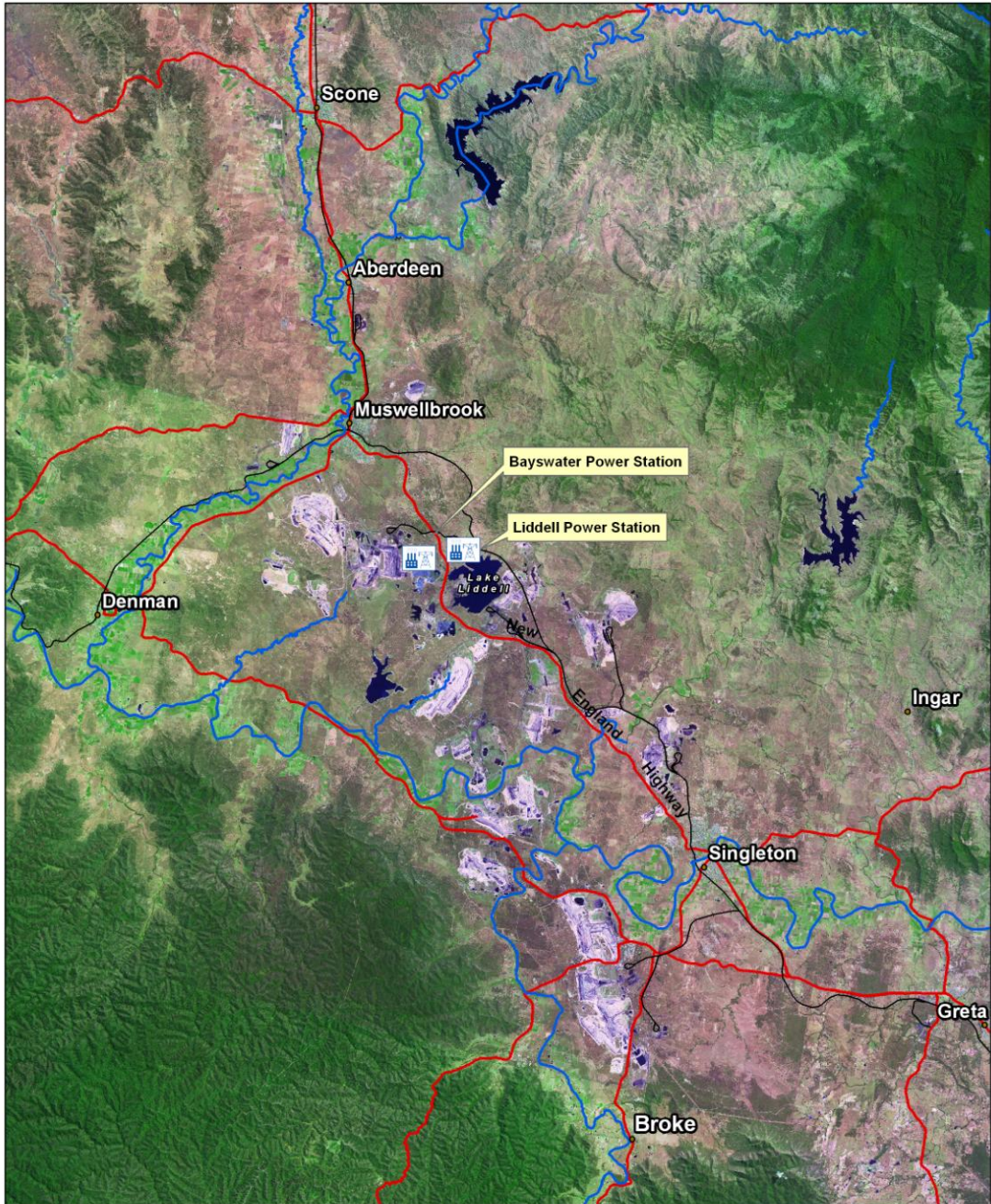


- Legend**
- ① Newcastle Redevelopment
  - ② NPC Bulk Cargos
  - ③ Graincorp Grain Terminal
  - ④ Newcastle Marina
  - ⑤ Floating Dock
  - ⑥ Honeysuckle
  - ⑦ Orica
  - ⑧ Port Waratah Coal Services
  - ⑨ Newcastle Coal Infrastructure Group
  - ⑩ Former BHP Steelworks Site
  - ⑪ Coppers
  - ⑫ Steel River Site
  - ⑬ Commonwealth Steel



## Newcastle : Transition Greenfield from Brownfield Developments

Copyright Department of Environment, Climate Change & Water (DECCW), June, 2010  
This map is not guaranteed to be free from error or omission.  
The Department of Environment, Climate Change & Water (DECCW) and its employees  
disclaim liability for any act done on the information in the  
map and any consequences of such acts or omissions.

N  
0 0.25 0.5 0.75 1 km  
Datum/Projection: GDA 1994 MGA Zone 56  
Printed By:  
DECCW  
23 June 2010  
© Newcastle Development Control Authority Newcastle NSW



**Legend**

-  Power Stations
-  Major Rivers
-  Railway Lines
-  Main Roads

**Upper Hunter Valley  
Mining & Power  
Generation Industries**

Copyright Department of Environment and Climate Change (2009), June, 2010  
This map is not guaranteed to be free from error or omission  
The Department of Environment and Climate Change (DECC) and its employees  
disclaim liability for any act done or the information on the  
map and any consequences of such acts or omissions.

N  
0 2 4 6 8 10 12 km  
Datum/Projection: AGD 1966 AMG Zone 56  
Printed By:  
DECCW  
23 June 2010  
© Workday/StewartOneO#Graham/Ministeries.mcd